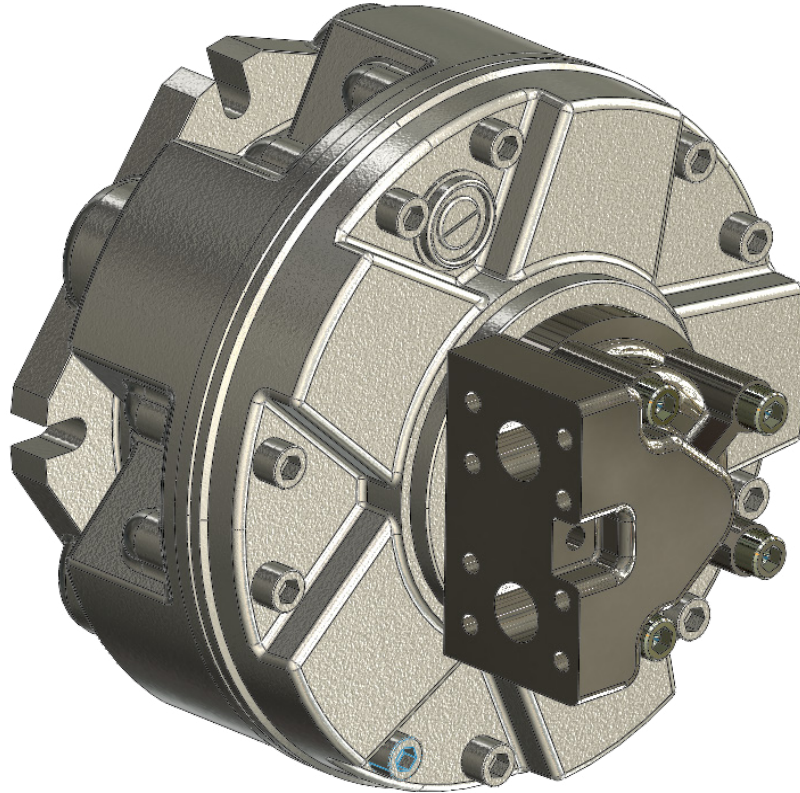


FS50 SERIES



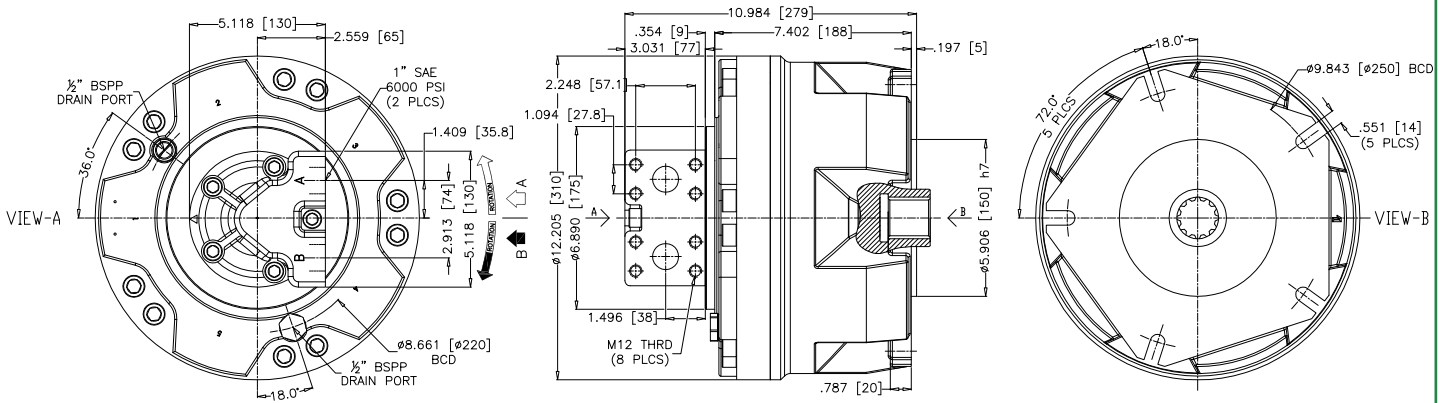
FS50 Series		250	300	350	420	500	550	600	700
Displacement	in ³ /rev	15.33	18.55	21.17	25.91	30.05	34.49	38.03	43.01
Torque/100 psi (Theor)	ft/lb	20.34	24.62	28.09	34.38	39.87	45.77	50.46	57.08
Nominal pressure ⁽¹⁾	psi	3550	3500	3550	3550	3550	3550	3550	3550
Peak pressure	psi	6500	6500	6100	6100	5800	5000	5000	5000
Max. speed ⁽²⁾	rpm	700	700	650	600	575	500	500	400
Peak power	HP	110	110	110	110	110	110	110	110

FS50 Series HD		250	300	350	420	500	550	600	700
Displacement	in ³ /rev	15.33	18.55	21.17	25.91	30.05	34.49	38.03	43.01
Torque/100 psi (Theor)	ft/lb	20.34	24.62	28.09	34.38	39.87	45.77	50.46	57.08
Nominal pressure ⁽¹⁾	psi	3550	3500	3550	3550	3550	3550	3550	3550
Peak pressure	psi	6500	6500	6100	6100	5800	5000	5000	5000
Max. speed ⁽²⁾	rpm	1000	1000	850	800	800	750	750	750
Peak power	HP	135	135	135	135	135	135	135	135

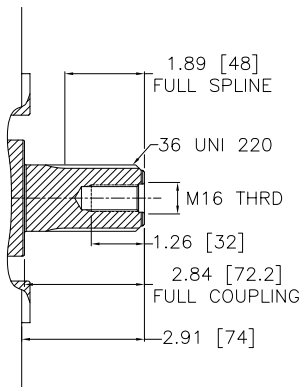
Approximate Weight: 191 lbs **Motor Casing Oil Capacity:** 305 in³ **Max. Casing Pressure:** 14.5 psi (72.5 psi peak)

1) Continuous or average working pressure should be chosen on the motor bearing lifetime choice. 2) Speed limitation with optional low speed distributors (eg. D31); see distributor pages section.

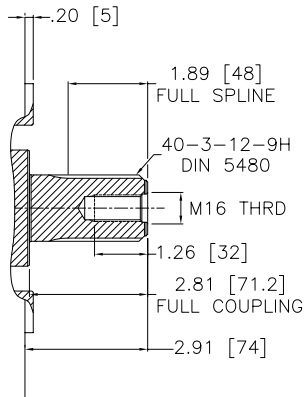
A1 MOUNT



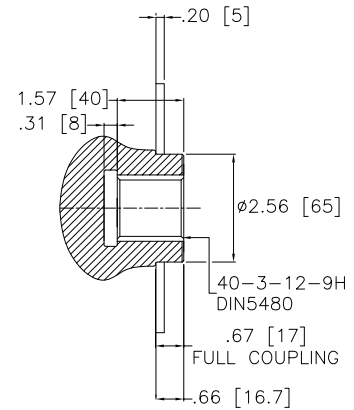
SHAFT OPTIONS FOR A1 MOUNT



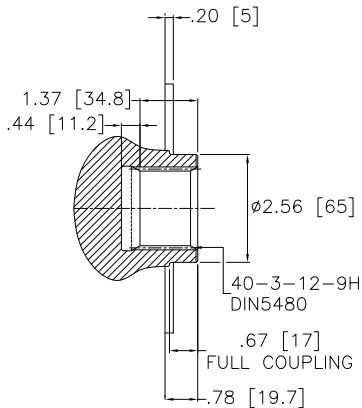
Code 1



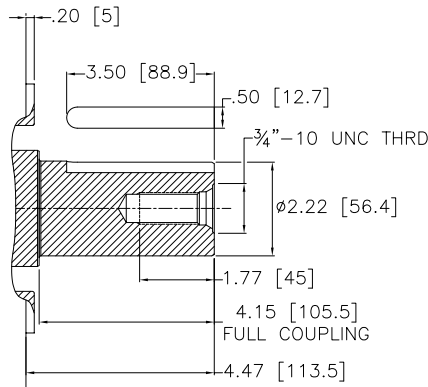
Code 7



Code 9



Code 11



Code 33

FS50 ORDERING CODES

