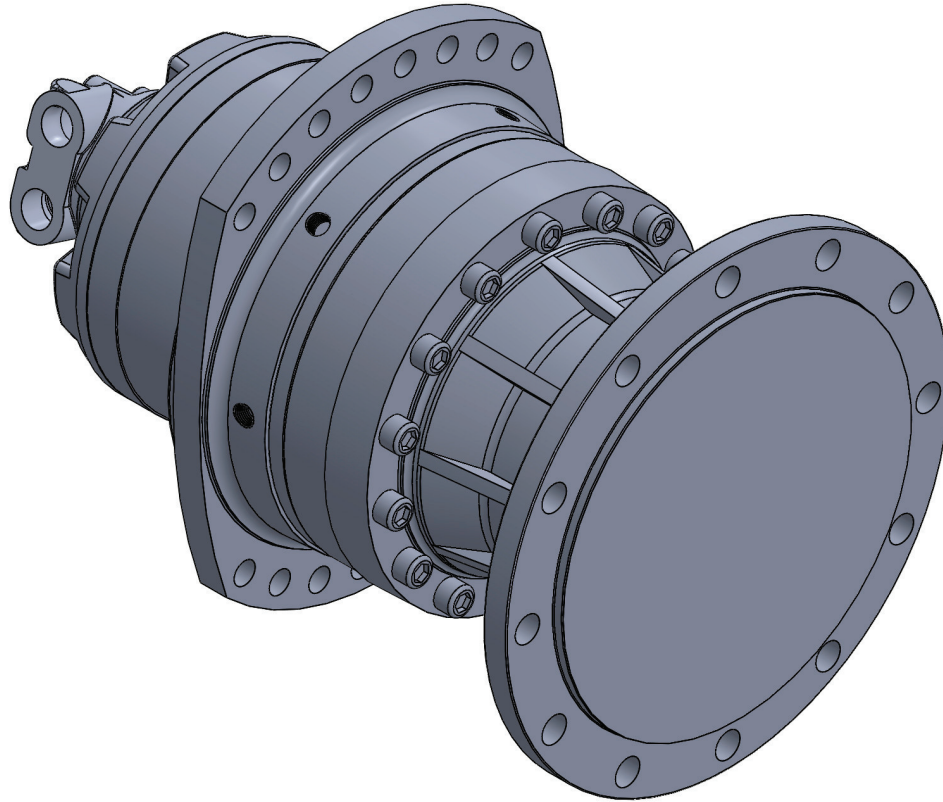


## PSW260



Motor: FS507

Weight:

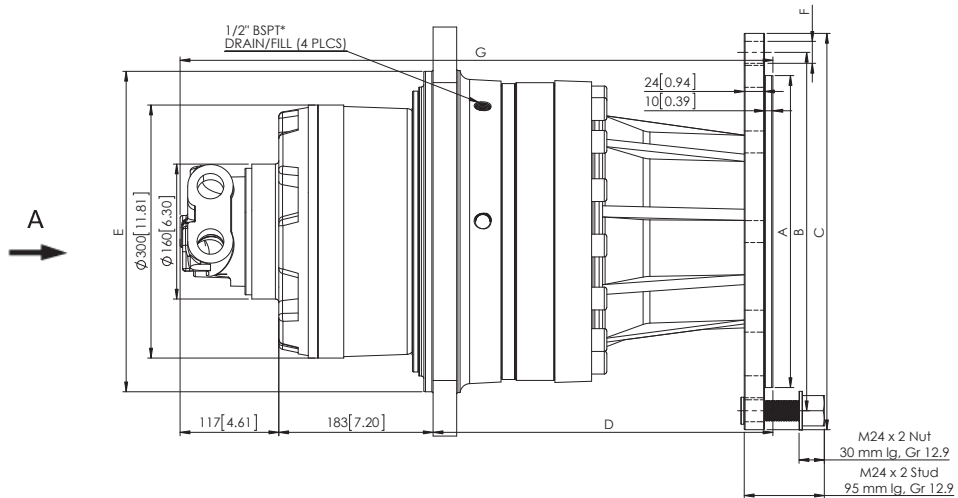
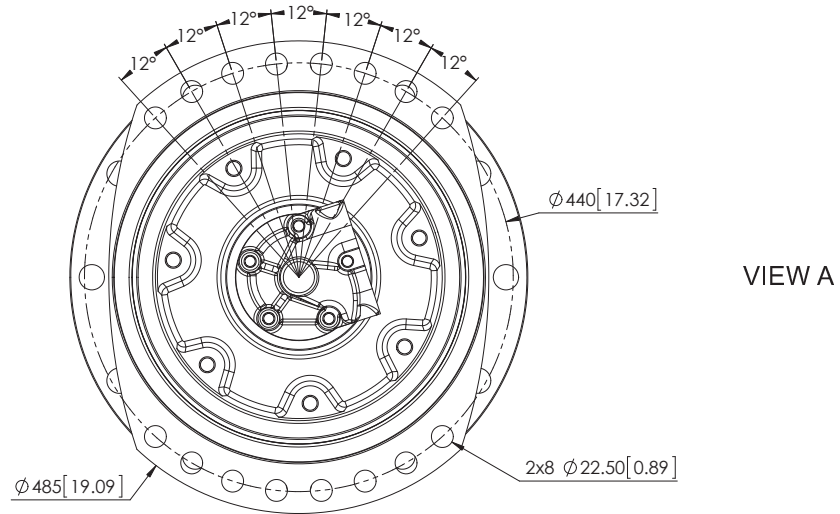
Oil:

Gearbox Case Pressure: 5 psi <sup>(3)</sup>

<b>Nominal Displacement</b>		<b>3500</b>	<b>4100</b>	<b>4600</b>	<b>5000</b>	<b>5550</b>	<b>5900</b>
Displacement	in <sup>3</sup> /rev	213.57	249.75	281.33	302.13	340.34	359.57
Torque/100 psi (Theor)	ft/lb	283.40	331.41	373.32	400.92	451.62	477.14
Motor Cont Pressure Rating <sup>(1)</sup>	psi	4000	4000	4000	3600	3600	4000
Motor Peak Pressure Rating	psi	6000	5500	5500	6000	6000	6000
Output Cont Torque Rating	ft/lb	11336	13256	14933	14433	16258	19085
Output Peak Torque Rating	ft/lb	17004	18227	20532	23000	23000	23000
Continuous Speed <sup>(2)</sup>	rpm	80	70	65	60	50	45
Max. speed <sup>(2)</sup>	rpm	130	120	115	105	110	95
Peak power	HP	120	120	120	120	120	120
Brake Release Pressure	psi	240	240	240	240	240	240
Max Brake Release Pressure	psi	600	600	600	600	600	600
Max Brake Holding Torque	ft-lb	5000	5000	5000	5000	5000	5000

1) Continuous or average working pressure should be chosen on the motor bearing lifetime choice, 2) Speed limitation with optional low speed distributors (eg. D31); see distributor pages section. 3) For both separate and common oil. Consult SAI for high pressure casing.

## PSW260 DIMENSIONS



Unit Type	A mm [in]	B mm [in]	C mm [in]	D mm [in]	E mm [in]	F mm [in]	G mm [in]
With Brake	$\phi 370$ [ $\phi 14.57$ ]	$\phi 425$ [ $\phi 16.73$ ]	$\phi 472$ [ $\phi 18.58$ ]	$\phi 393$ [ $\phi 15.47$ ]	$\phi 380$ [ $\phi 14.94$ ]	12 x $\phi 26$ [12x $\phi 1.02$ ]	703 [27.67]
Without Brake	$\phi 370$ [ $\phi 14.57$ ]	$\phi 425$ [ $\phi 16.73$ ]	$\phi 472$ [ $\phi 18.58$ ]	$\phi 393$ [ $\phi 15.47$ ]	$\phi 380$ [ $\phi 14.94$ ]	12 x $\phi 26$ [12x $\phi 1.02$ ]	703 [27.67]

\*Brake Pilot only on motor models with internal brake