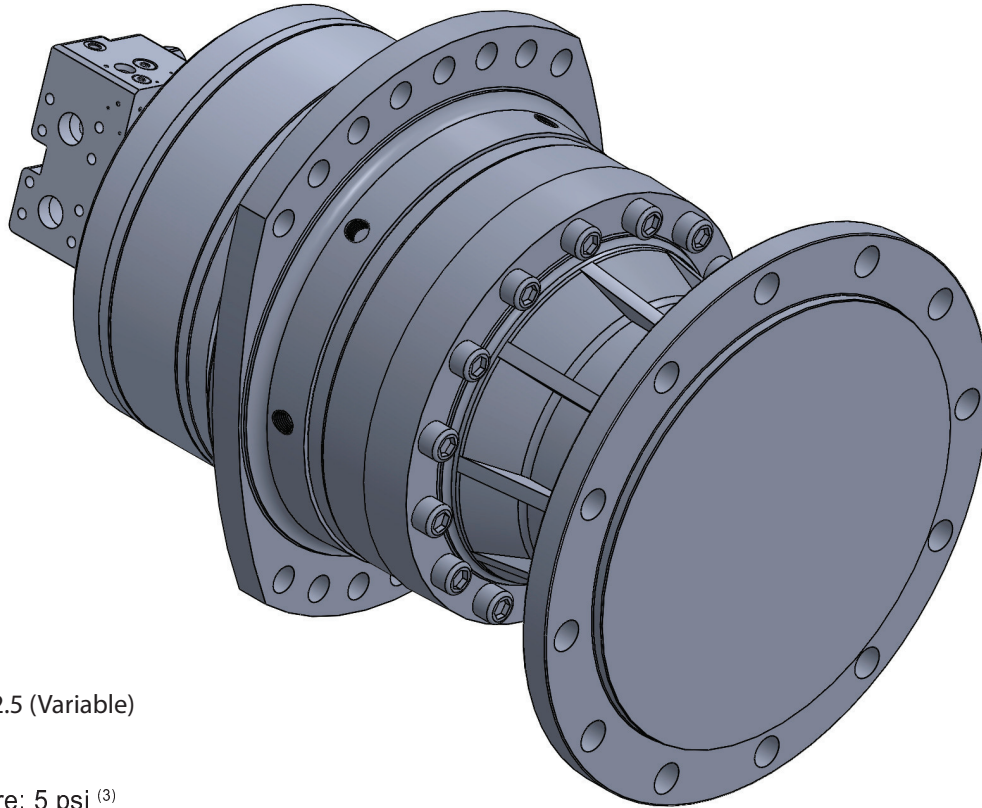


## PSWD260/PSWV260 DUAL/VARIABLE DISPLACEMENT MOTOR



Motor: TD2.5 (Dual)/ TV2.5 (Variable)

Weight:

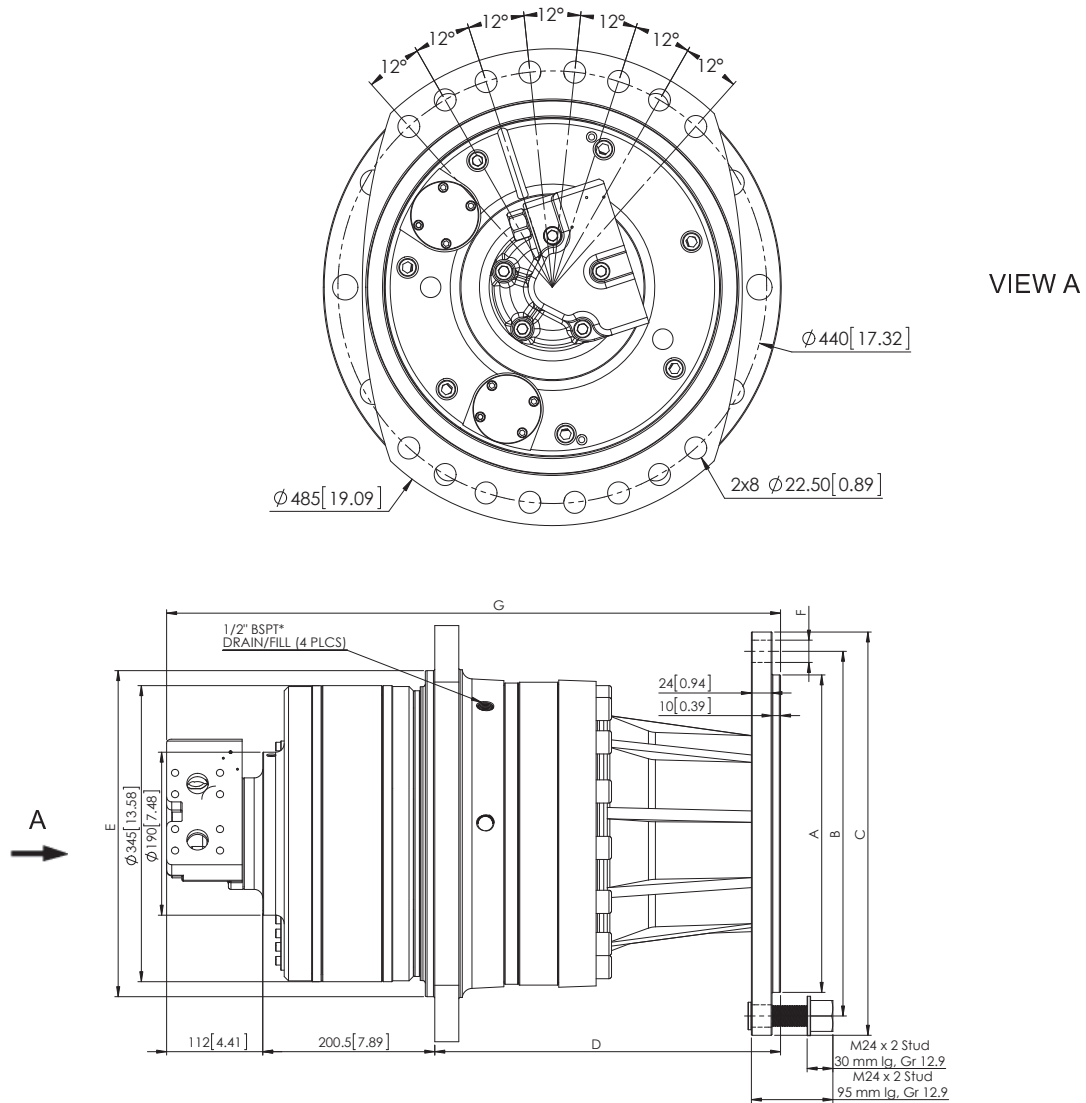
Oil:

Gearbox Case Pressure: 5 psi <sup>(3)</sup>

Nominal Displacement		3500		4000		4500		4900	
		max	min	max	min	max	min	max	min
Displacement Setting									
Displacement	in <sup>3</sup> /rev	212.76	106.38	244.21	122.10	274.58	137.29	296.41	148.20
Torque/100 psi (Theor)	ft/lb	252.33	141.16	324.06	162.03	364.35	182.17	393.33	196.66
Motor Cont Pressure Rating <sup>(1)</sup>	psi	5000	5000	5000	5000	5000	5000	5000	5000
Motor Peak Pressure Rating	psi	5800	5800	5800	5800	5800	5800	5800	5800
Output Cont Torque Rating	ft/lb	14116	7058	16203	8101	21132	10566	22813	11406
Output Peak Torque Rating	ft/lb	16375	8187	18795	9397	21132	10566	22813	11406
Continuous Speed <sup>(2)</sup>	rpm	120	180	110	160	100	140	90	120
Max. speed <sup>(2)</sup>	rpm	150	200	110	180	120	160	100	140
Peak power	HP	160	160	160	160	160	160	160	160
Brake Release Pressure	psi	240	240	240	240	240	240	240	240
Max Brake Release Pressure	psi	600	600	600	600	600	600	600	600
Max Brake Holding Torque	ft-lb	16375	16375	18795	18795	21132	21132	22813	22813
Hi-Low Ratios (Dual Disp.)	1:	2, 3, 4							
Motor Pilot Pressure	psi	20 - 30 bar (290 - 430 psi)							
Disp. Ranges (Variable Disp.)	% max	100-25, 90-15, 75-0							

1) Continuous or average working pressure should be chosen on the motor bearing lifetime choice, 2) Speed limitation with optional low speed distributors (eg. D31); see distributor section. 3) For both separate and common oil. Consult SAI for high pressure casing.

## PSWD260/PSWV260 DIMENSIONS



Unit Type	A mm [in]	B mm [in]	C mm [in]	D mm [in]	E mm [in]	F mm [in]	G mm [in]
With Brake	Ø 370 [Ø 14.57]	Ø 425 [Ø 16.73]	Ø 472 [Ø 18.58]	Ø 393 [Ø 15.47]	Ø 380 [Ø 14.94]	12 x Ø26 [12xØ1.02]	715.5 [28.16]
Without Brake	Ø 370 [Ø 14.57]	Ø 425 [Ø 16.73]	Ø 472 [Ø 18.58]	Ø 393 [Ø 15.47]	Ø 380 [Ø 14.94]	12 x Ø26 [12xØ1.02]	715.5 [28.16]

\*Brake Pilot only on motor models with internal brake